

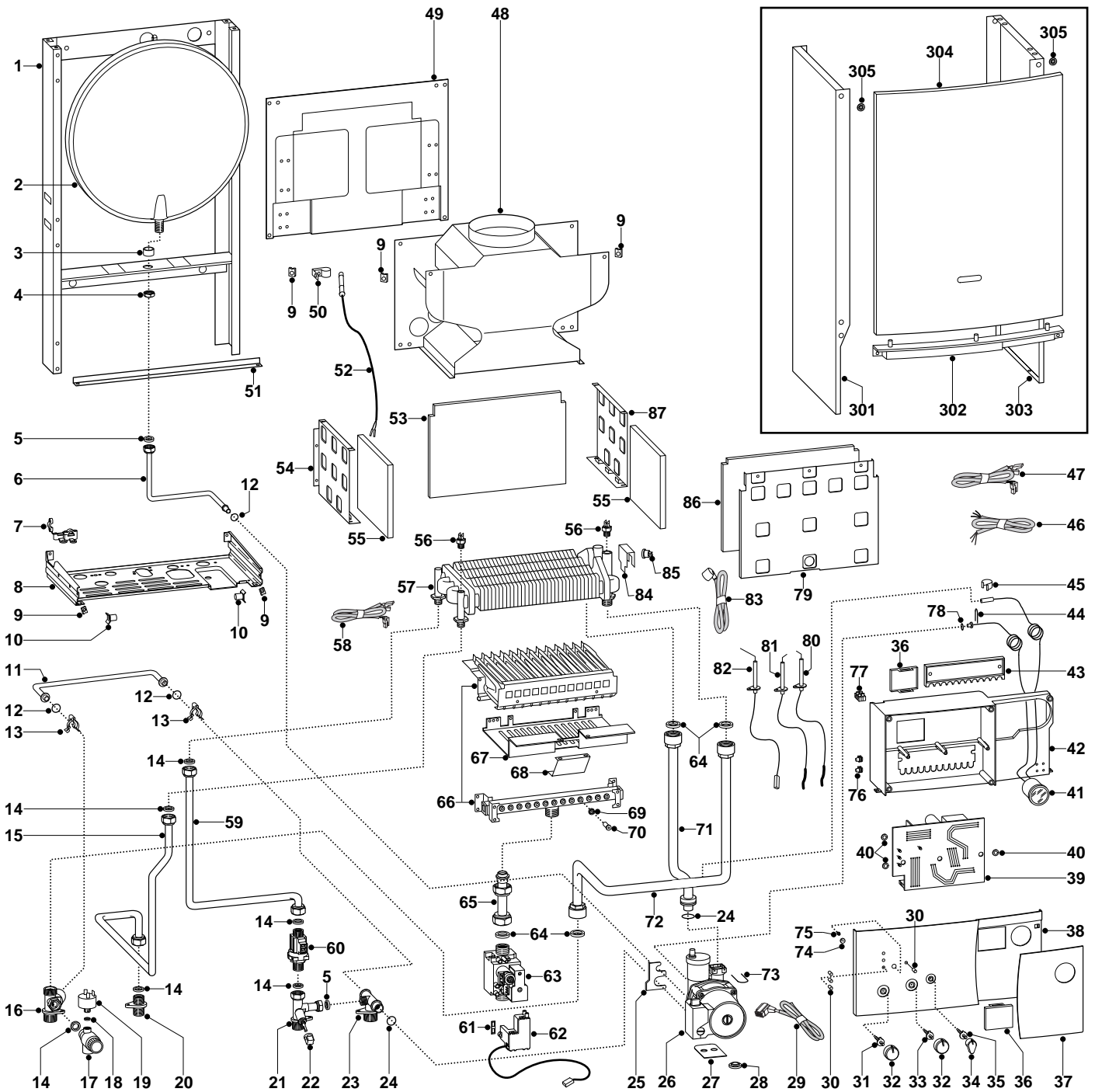
SPARE PARTS EXPLODED VIEW
GAS WALL BOILERS

Model

TX 23 MI

Edition 1 of 22 October 2002





ER2002210031401001

MODEL	CHARACTERISTICS	SERIAL NO. VALIDITY	REF.
TX 23 MI	METHANE	2320220500001	A

PART.	CODE	DESCRIPTION	REF.	NOTE
1	-----	Boiler frame		11
2	998616	Expansion vessel		
3	998776	Bush		
4	998581	3/8" lock nut		
5	573521	Gasket 3/8" (25 pcs)		
6	999525	Pipe (expansion vessel)		
7	998580	Cable holder		
8	-----	Hydraulic group support		11
9	570717	Spring (fastening) (5 pcs)		
10	995492	Pivot		
11	998589	By-pass pipe		
12	998077	O-ring gasket (20 pcs)		
13	998064	Spring (by-pass pipe) (10 pcs)		
14	573528	Gasket 1/2" (25 pcs)		
15	999109	Pipe (D.H.W. outlet)		
16	996049	Flow group (twin pass)		
17	998447	Safety valve (1/4" 3 Bar)		
18	569390	Gasket 1/4" (25 pcs)		
19	995903	Low water pressure switch		
20	998611	Union (hot water outlet)		
21	996050	Tap fitting		
22	571559	Filling cock knob		
23	996048	Return group with tap attachment		
24	998424	O-ring (C=4 D=17,04) (10 pcs)		
25	999162	Pump bracket		
26	999688	Pump		
27	995364	Spacer plate (pump)		
28	999100	Lock washer (20 pcs)		
29	999968	Cable (P.C.B. - pump)		
30	998576	Led (L=10.8)		
31	998578	Spindle (temperature knob)		
32	998933	Control knob		
33	998575	Spindle (temperature knob)		
34	998932	On-off knob		
35	998574	Spindle (on/off knob)		
36	997745	Timer opening cover		
37	995373	Front cover door		
38	998927	Front cover		
39	999722	P.C.B. (TX MI)		
40	569711	Nylon bush (10mm - 20 pcs)		
41	998935	Temperature/pressure gauge		
42	-----	Control panel		11
43	999238	Control panel cover		
44	571548	Clip (main flow switch)		
45	571565	Fixing spring (pressure gauge)		
46	999521	Cable (power supply)		
47	998635	Low voltage wiring		
48	996425	Flue hood		
49	-----	Sealed chamber		11
50	573349	Spring (Flue Control Probe)		
51	995393	Frame support		
52	995348	Flue control probe cable		
53	996126	Panel (insulation - rear)		
54	995893	Panel (combustion chamber - L.H. side)		
55	998639	Panel (insulation - side)		
56	998458	Temperature probe		
57	998619	Exchanger (twin pass)		
58	998865	Wiring (probes)		
59	996083	Pipe (cold water inlet)		
60	996072	Flow gauge (bitron - 1/2" M-M)		
61	574279	Gasket (5 pcs)		
62	999919	Spark generator		
63	997089	Gas valve (SIT 845 SIGMA)		
64	573520	Gasket 3/4" (25 pcs)		
65	998729	Pipe (gas valve)		
66	996158	Burner 12 ramp (N.G.)		

PART.	CODE	DESCRIPTION	REF.	NOTE
67	999411	Protection screen		
68	999435	Protection screen		
69	572138	Burner jet washer (20 pcs)		
70	998433	Burner jet (N.G. 1.30) (10 pcs)		
71	998734	Pipe (C.H. return)		
72	998733	Pipe (C.H. flow)		
73	997153	U-clip (20 pcs)		
74	998604	Reset button		
75	998573	Reset knob insert		
76	569720	Blind grommet		
77	571787	Terminal board (two pole)		
78	998517	Gasket (20 pcs)		
79	996134	Panel (combustion chamber - front)		
80	998623	Electrode (Ignition R.H.)		
81	998622	Electrode (Ignition L.H.)		
82	998624	Electrode (Detection)		
83	999927	Cable (overheat thermostat)		
84	998582	Fixing spring (overheat thermostat)		
85	996065	Thermostat (overheat- 103°C)		
86	995999	Panel (insulation - front)		
87	995892	Panel (combustion chamber - R.H. side)		
301	998695	Case panel (L.H. side)		
302	998596	Insert case		
303	998694	Case panel (R.H. side)		
304	998509	Panel (front case)		
305	995305	Washer (20 pcs)		
311	998716	Burner jet (full kit - N.G.) (15 pcs)		12
312	998717	Burner jet (full kit - L.P.G.) (15 pcs)		12

NOTE	DESCRIPTION
11	Not supplied as a spare part
12	Not illustrated