



SPARE PARTS EXPLODED VIEW  
GAS WALL BOILERS

Models

**T2 23 MFFI**

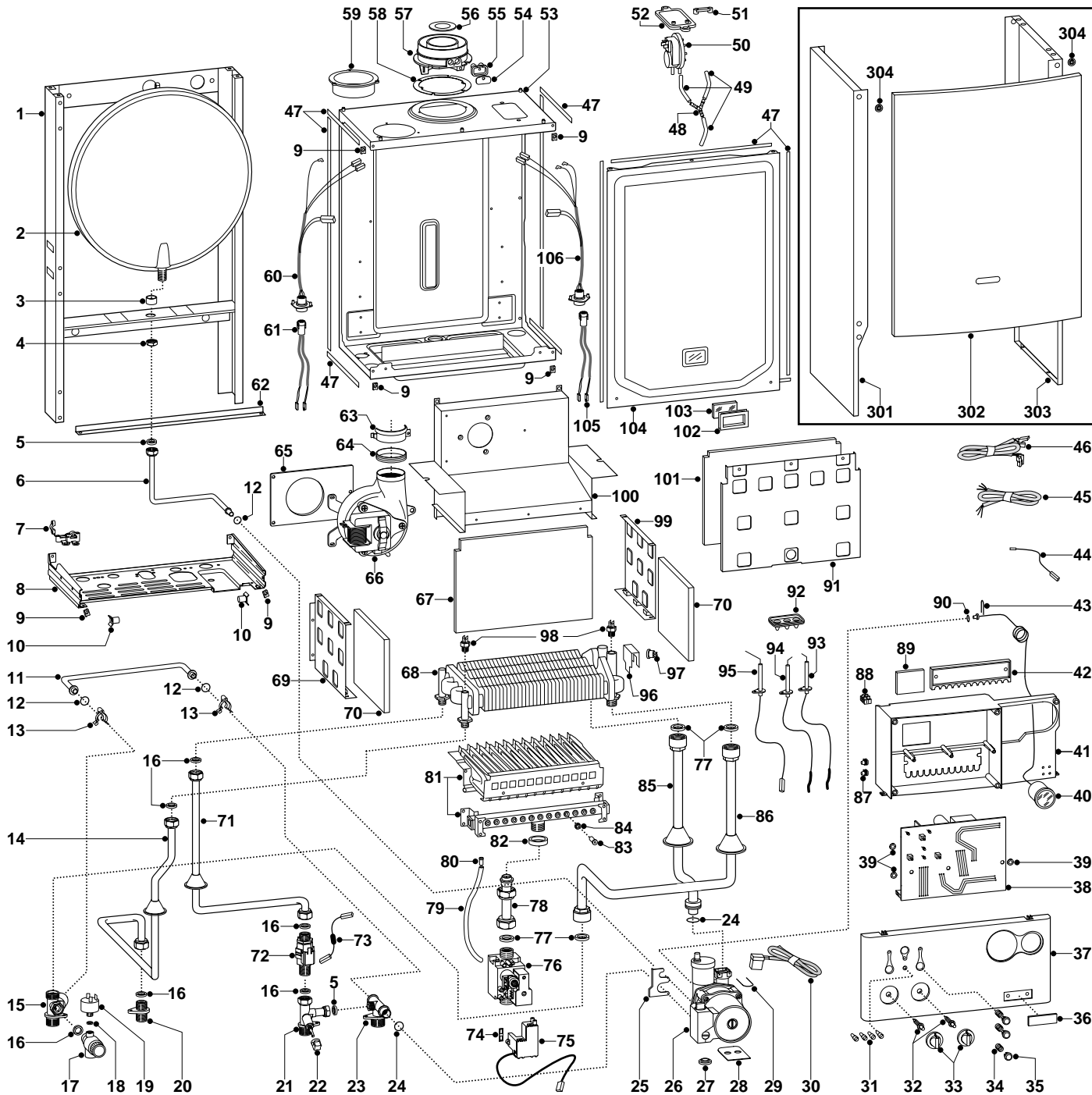
---

Edition 3 of 1 December 2001



Add to Edition 2

ER2001210020903001



ER2001210020903001

MODELS	CHARACTERISTICS	SERIAL NO: VALIDITY	REF.
T2 23 MFFI	METHANE	2320132300001	A
T2 23 MFFI	LPG	2320132300001	B

<b>PART.</b>	<b>CODE</b>	<b>DESCRIPTION</b>	<b>REF.</b>	<b>NOTE</b>
1	-----	Boiler frame		11
2	998616	Expansion vessel		
3	998776	Bush		
4	998581	3/8" lock nut		
5	573521	Gasket 3/8"		
6	999525	Pipe (expansion vessel)		
7	998580	Cable holder		
8	-----	Hydraulic group support		11
9	570717	Spring (fastening)		
10	995492	Pivot		
11	998589	By-pass pipe		
12	998077	O-ring gasket		
13	998064	Spring (by-pass pipe)		
14	999104	Pipe (D.H.W. outlet)		
15	996049	Flow group (twin pass)		
16	573528	Gasket 1/2"		
17	998447	Safety valve (1/4" 3 Bar)		
18	569390	Gasket 1/4"		
19	995903	Low water pressure switch		
20	998611	Union (hot water outlet)		
21	996050	Tap fitting		
22	571559	Filling cock knob		
23	996048	Return group with tap attachment		
24	998424	O-ring		
25	999162	Pump bracket		
26	999688	Pump		
27	999100	Lock washer		
28	995364	Spacer plate (pump)		
29	997153	U-clip		
30	999968	Cable pump-circuit		
31	998577	Led (L=14.2)		
32	999592	Spindle (knobs)		
33	999668	Control knob		
34	999595	Spring (push button)		
35	999977	Control panel button		
36	997048	Name badge		
37	995460	Control panel (front)		
38	999410	Printed circuit board (T2 FFI)		
39	569711	Nylon bush (10mm)		
40	999245	Pressure gauge		
41	-----	Control panel		11
42	998953	Cable holder cover		
43	571548	Clip (main flow switch)		
44	999925	Earth cable (sealed chamber)		
45	999521	Cable (power supply)		
46	998635	Low voltage wiring		
47	998516	Gasket (adhesive 10x6)		
48	573327	"Y" piece (air pressure)		
49	571575	Silicone pipe (positive signal)		
50	998484	Air pressure switch		
51	573329	Pressure intake cover		
52	997203	Support plate (air pressure switch)		
53	-----	Sealed chamber		11
54	998565	Cover (flue test point)		
55	998636	Gasket (flue test point)		
56	999980	Restrictor (flue - exhaust manifold/header)		
57	999561	Flue (exhaust manifold/header)		
58	998637	Gasket (flue collar)		
59	998595	Plug (air intake)		
60	995318	Fan cable & sensor		
61	995319	Fan cable & sensor		
62	995393	Frame support		
63	998566	Fixing clamp (fan)		
64	995349	Gasket (fan)		
65	999135	Panel (insulation - fan)		

ER2001210020903001

<b>PART.</b>	<b>CODE</b>	<b>DESCRIPTION</b>	<b>REF.</b>	<b>NOTE</b>
66	999397	Fan		
67	998640	Panel (insulation - rear)		
68	998619	Exchanger (twin pass)		
69	995893	Panel (combustion chamber - L.H. side)		
70	998639	Panel (insulation - side)		
71	996044	Pipe (cold water inlet)		
72	996072	Flow gauge (bitron - 1/2" M-M)		
73	999495	Extension (with 15 Ohm resistance)		
74	574279	Gasket		
75	999919	Spark generator		
76	997089	Gas valve (SIT 845 SIGMA)		
77	573520	Gasket 3/4"		
78	998729	Pipe (gas valve)		
79	573576	Compensation tube		
80	573325	Rivet		
81	998618	Burner 12 ramp (natural gas)	A	
81	998669	Burner 12 ramp (L.P.G.)	B	
82	569443	Silicone seal		
83	998433	Burner jet (N.G. 1.30)	A	
83	998434	Burner jet (L.P.G. 0.77)	B	
84	572138	Burner jet washer		
85	998731	Pipe (C.H. return)		
86	998727	Pipe (C.H. flow)		
87	569720	Blind grommet		
88	571787	Terminal board (two pole)		
89	997745	Timer opening cover		
90	998517	Gasket		
91	995889	Panel (combustion chamber - front)		
92	998147	Ignition electrode cable rubber		
93	998623	Electrode (Ignition R.H.)		
94	998622	Electrode (Ignition L.H.)		
95	998624	Detection electrode		
96	998582	Fixing spring (overheat thermostat)		
97	996065	Thermostat (overheat- 103°C)		
98	998458	Temperature probe		
99	995892	Panel (combustion chamber - R.H. side)		
100	999385	Flue hood		
101	995995	Panel (insulation - front)		
102	998076	Gasket (sight glass)		
103	998075	Sight glass		
104	999151	Panel (combustion chamber - front)		
105	999929	Cable (P.C.B./air pressure switch)		
106	999425	Wiring (air pressure switch/probe)		
301	998477	Case panel (L.H. side)		
302	999316	Case panel (front)		
303	998476	Case panel (R.H. side)		
304	995305	Washer		
311	998716	Burner jet (full kit - N.G.)		12
312	998717	Burner jet (full kit - L.P.G.)		12

<b>NOTE</b>	<b>DESCRIPTION</b>
11	Not supplied as a spare part
12	Not illustrated

ER2001210020903001