



ARISTON

SPARE PARTS EXPLODED VIEW GAS WALL BOILERS

Model

MATIS

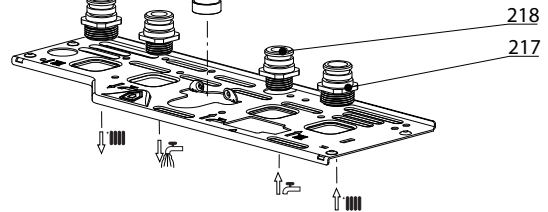
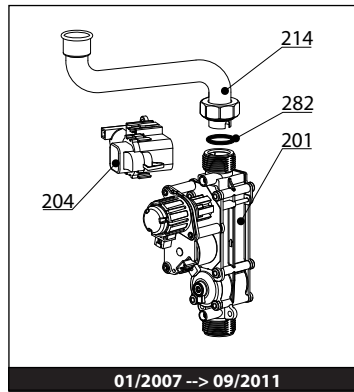
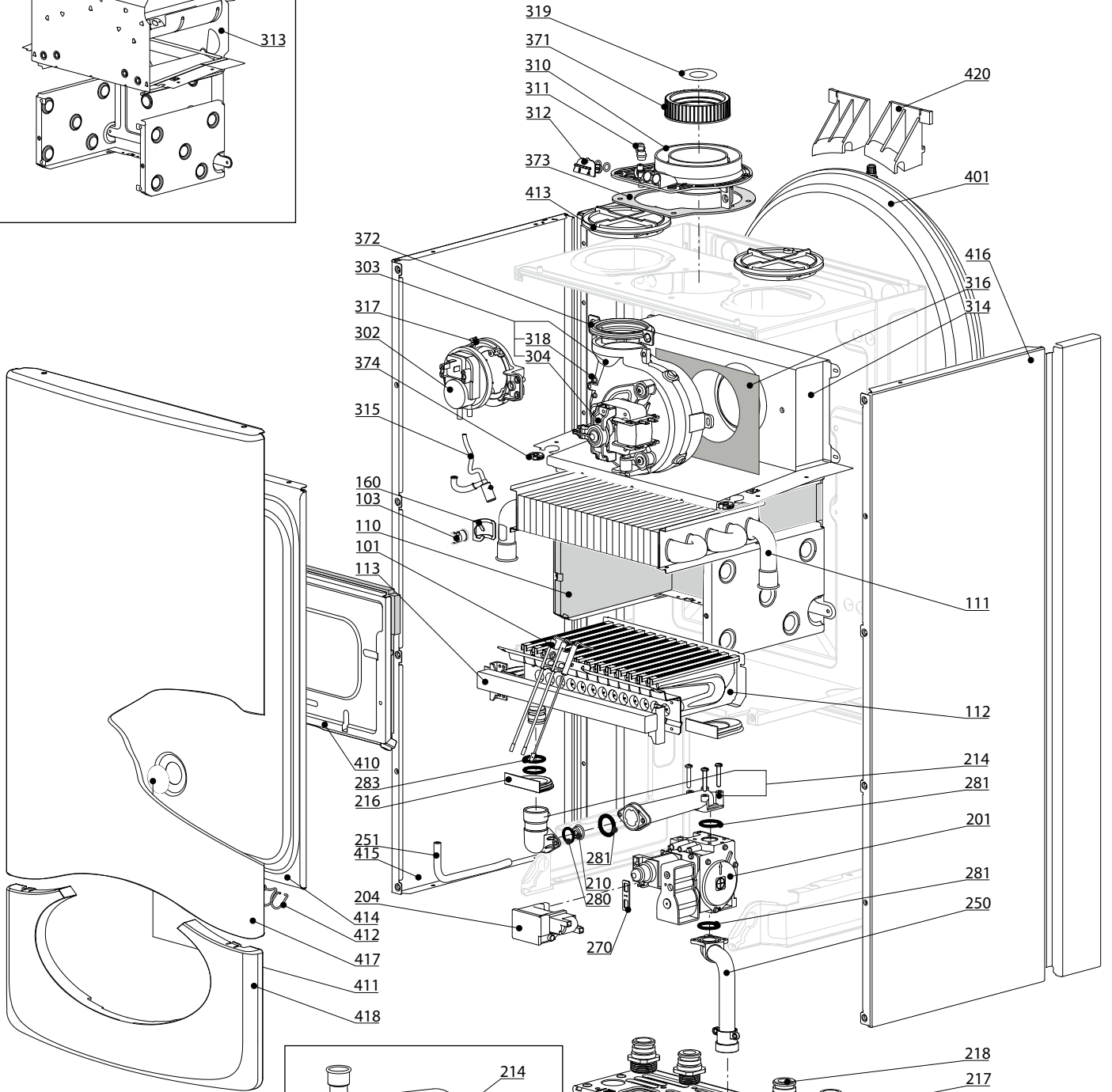
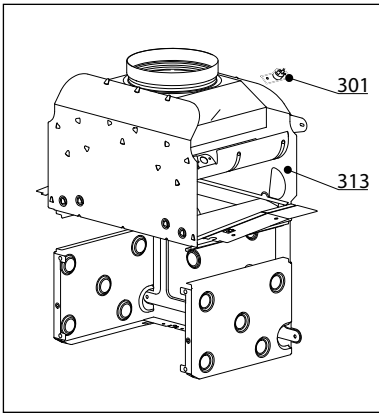
R8203259-03 - 17/07/2012

MATIS

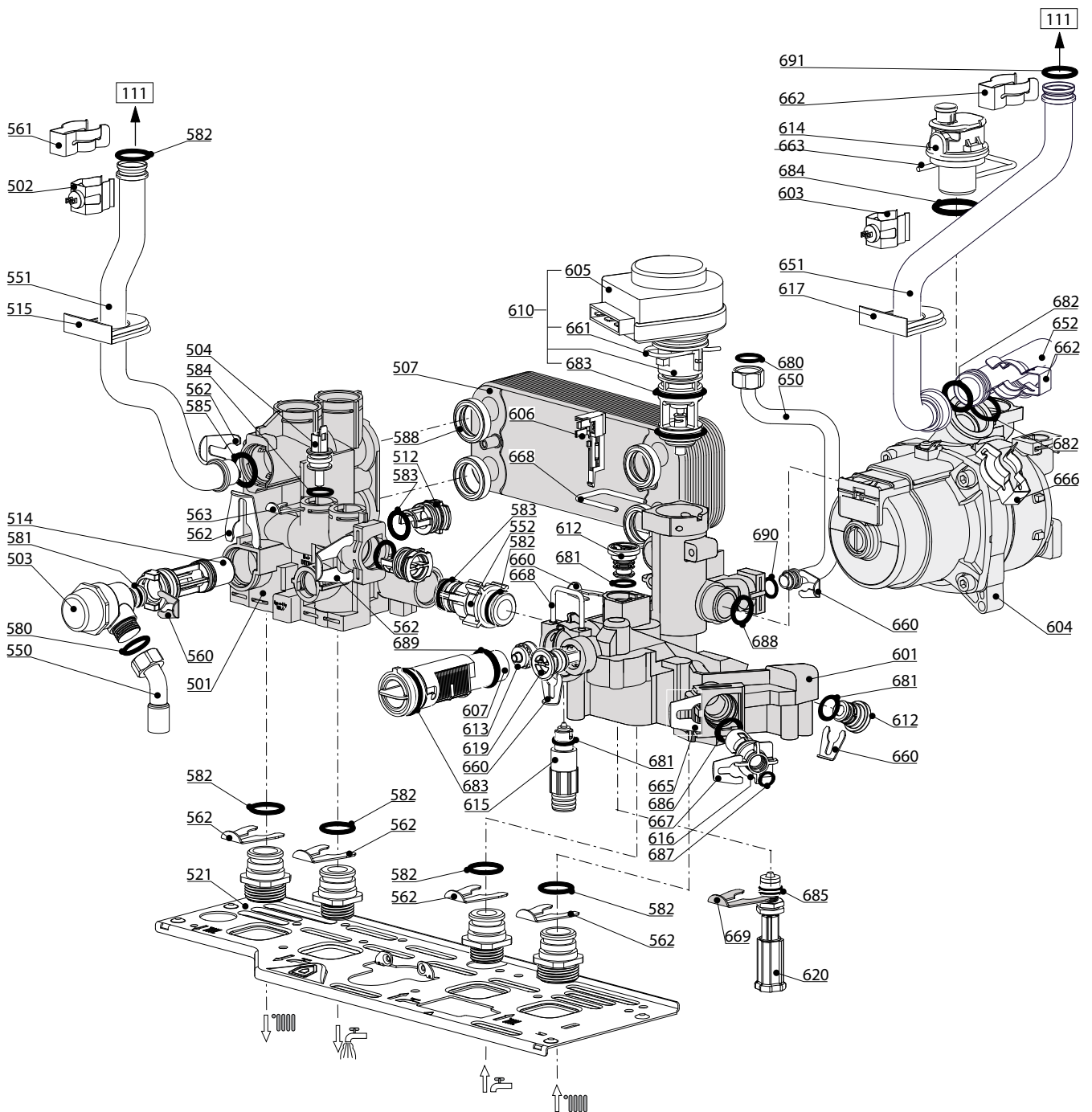
Domestic Gas Boilers

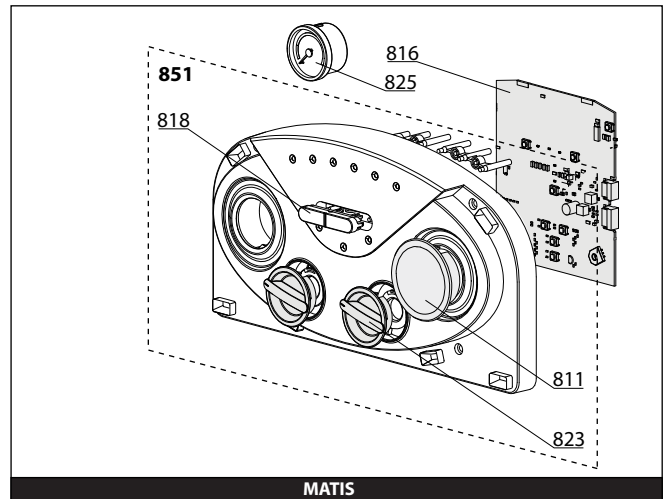
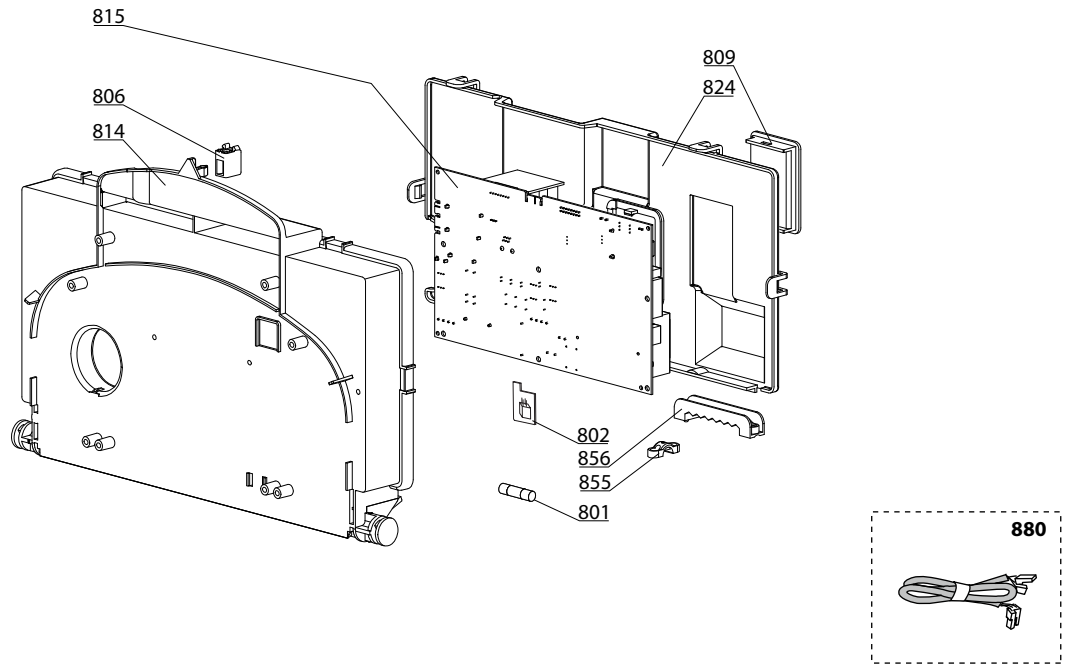
1	3300443	MATIS 24 CF NG	11-2011	-
1	3300405	MATIS 24 CF NG	02-2011	12-2011
1	3300445	MATIS 24 CF LPG	11-2011	-
1	3300404	MATIS 24 CF LPG	02-2011	12-2011
2	3300407	MATIS 24 FF NG	02-2011	12-2011
2	3300442	MATIS 24 FF NG	11-2011	-
2	3300406	MATIS 24 FF LPG	02-2011	12-2011
2	3300444	MATIS 24 FF LPG	11-2011	-

Col	Reference	Model type	Begin	End
-----	-----------	------------	-------	-----

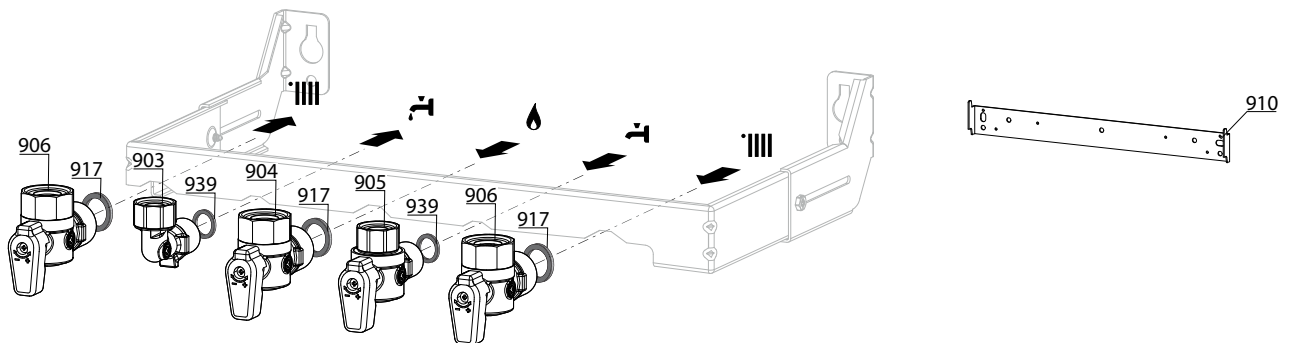


01/2007 -> 09/2011





900



5000

- | | | |
|---|---|---|
| <p>5001
 Transf. gaz > GPL
 Conv. gas > GPL
 Trasn. gas > GPL
 Transf. gas > GPL</p> | <p>5002
 Transf. gaz > Nat
 Conv. gas > Nat
 Trasn. gas > Met
 Transf. gas > Met</p> | <p>5020
 Options
 Accessories
 Opzioni
 Accessorio</p> |
|---|---|---|

☉➔	Description	Manf. Pt. N	Type	<div style="display: flex; justify-content: space-between; align-items: center;"> <div style="transform: rotate(-45deg); font-size: small;">MATIS 24 CF MATIS 24 FF</div> <div style="border: 1px solid black; padding: 2px;">31</div> </div>																	
				1	2	3	4	5	6	7	8	9	10	11	12	13	14	15	16	17	18
0800	ELECTRICAL BOX																				
0801	FUSE 250V 2A - TEMPORIZED	61003456		•	•																
0802	MODULE KIT (EEPROM)	65111766		•	•																
0806	PUSH	65104228		•	•																
0809	INSPECTION COVER	65104294		•	•																
0811	HOLE PLATE	60001237		•	•																
0814	CONTROL PANEL	65104300		•	•																
0815	P.C.B. (MAIN)	60001580		•	•													09/11			
	P.C.B. (MAIN)	60001605-01		•	•												10/11				
0816	PRINTED CIRCUIT BOARD (DISPLAY)	60001579		•	•																
0818	PUSH BUTTON ON/OFF	65105087		•	•																
0823	KNOB	65105086		•	•																
0824	CONTROL PANEL COVER (REAR)	65104293		•	•																
0825	PRESSURE GAUGE	65104234		•	•																
0851	CONTROL PANEL	65108242		•	•																
0855	CABLE CLAMP	571562		•	•																
0856	CABLE CLAMP	65103377		•	•																
0880	EARTH WIRE	65104286		•	•																
	DISPLAY WIRING	60000746	/ CN02	•	•																
	FAN-IGNITER CABLE	60001391	/ CN03	•	•													09/11			
	NTC - PRES. SENSOR - GAS VALVE CABLE	60000840	/ CN04	•	•												10/11				
	SHUNT CABLE	60001389	/ CN04	•	•													09/11			
	IONIZATION ELECTRODE CABLE	65104518	/ CN05	•	•																
	THREE WAY VALVE CABLE	65104523	/ CN09	•	•																
	PUMP 1V CABLE	65105081	/ CN10	•	•																
	FAN CABLE	65107270	/ CN10	•	•																
	FLOW METER CABLE	60000813	/ CN14	•	•																
	FEEDER 240V	60000993	/ CN20	•	•																
	GAS VALVE CABLE	60001392	/ CN20	•	•													09/11			
	NTC - OVERHEAT THER. - PRES SWITCH CABLE	60000814	/ CN22	•	•																
	NTC PROBE - OVERHEAT THERMOSTAT CABLE	65104708	/ CN22	•	•																
	ROOM THERMOSTAT CABLE	60001253	/ CN25	•	•																
0900	JIG PLATE & PIPE FITTING																				
0903	HOT WATER CONNECTION	60000891		•	•																
0904	GAS SERVICE TAP	60000898		•	•																
0905	COLD WATER TAP	60000895		•	•																
0906	WATER FLOW & RETURN SERVI. TAP	60000885		•	•																
0910	WALL HOOK	60000625		•	•																
0917	SHEET GASKET D: 24-17-1.5	60061855-19		•	•																
0939	SHEET GASKET D: 16.5-11-1.5	60061854-14		•	•																
5000	ACCESSORIES																				
5001	BURNER JET FULL KIT (LPG)	65106690		•	•																
5002	BURNER JET FULL KIT (NG)	65106691		•	•																
5020	ROD PLATE	60000626		•	•																

LIST OF THE ABBREVIATIONS

HW	: Hot water.
CW	: Cold water.
C	: Ceramic resistance (normal heating).
Ca	: Ceramic resistance (accelerated heating)
TP	: Immersion heater.
1F	: With fittings.
2F	: Without fittings.
3F	: With fittings and another outlet connection.
AMI	: With mixing valve.
SMI	: Without mixing valve.
PUISS	: Power of th appliance.
PN	: Appliance with normal pression.
LP	: Appliance with low pression.
PV	: Appliance with variable power.
PF	: Appliance with fixed power.

IDENTIFICATION PLATE

SERIAL NUMBER

10 Characters :

04 05 125 011
 Year of manufacture Manufacturing day Sequential number

11 Characters :

1 95 065004 - 31
 Month of manufacture : Technical number of the appliance
 from 1 to 9 → Jan. to Sep.,
 O → Oct., N → Nov.,
 D → Dec. Sequential number
 Year of manufacture

19 Characters :

08 05 0013199 900640031
 Year of manufacture Product reference
 Month of manufacture Sequential number

20 Characters :

3675007 XX 2 07 070 00315
 Product reference Sequential number
 Millenium of manufacture Manufacturing day
 Year of manufacture

21 Characters :

3675007 XX 07 070 0000315
 Product reference Sequential number
 Year of manufacture Manufacturing day