



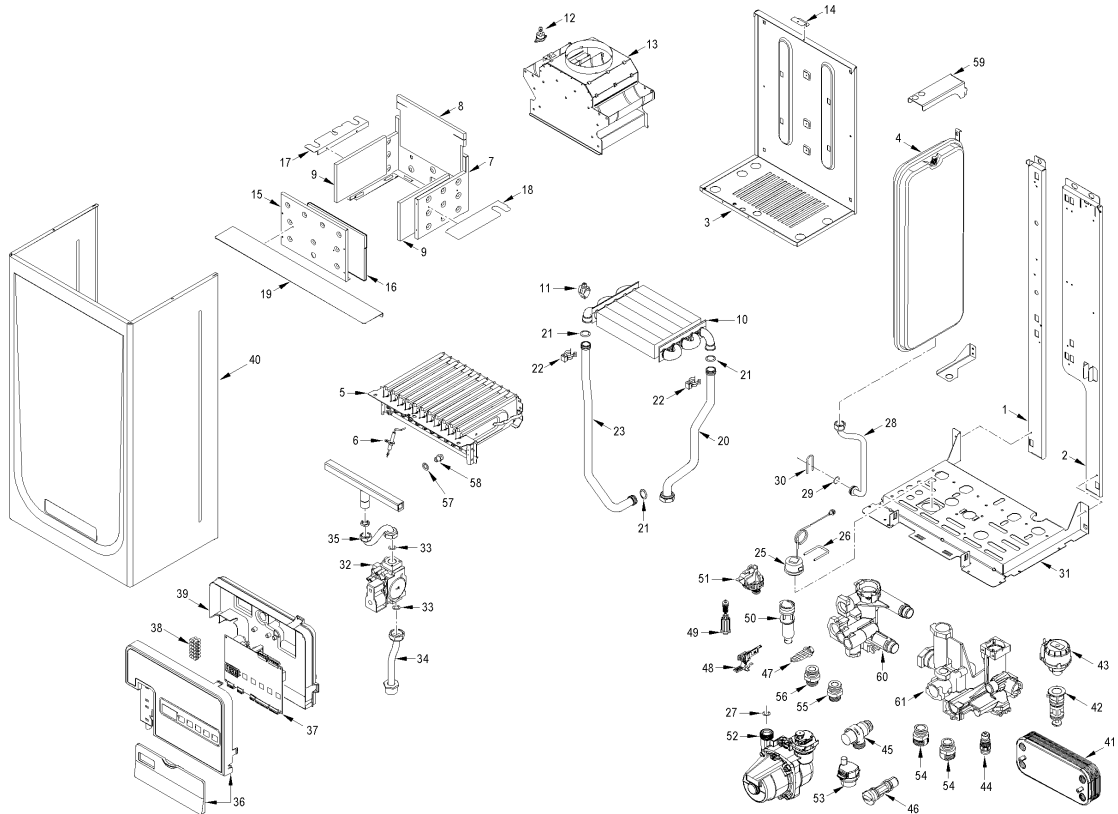
Fonderie Sime S.p.A. - Via Garbo, 27 - 37045 Legnago (VR) - [www.sime.it](http://www.sime.it)  
 Tribunale Verona 13531 - R.E.A. VR 171357 - C.C.P. 19423375 - N° Mecc. VR 014435  
 Capitale Sociale Euro 5.521.200 int. versato - Codice Fiscale/Partita IVA n. IT 01275930236

Comfort Ambiente - Via Garbo, 27 - 37045 Legnago (VR)

Tel +39 0442 631111 - Fax Servizio Commerciale: Italia +39 0442 631291 - Estero +39 0442 631293

Fax Servizio Tecnico +39 0442 631292 - Fax Ufficio Acquisti +39 0442 631292 - Fax Amministrazione +39 0442 631336

8109300 CALD.MET. FORMAT DGT 25 OF



Posiz.	Codice	Descrizione
001	6318350	Left hand side frame part
002	6318300	Right hand side frame part
003	6317650	Rear panel
004	5183724	Rectang. expansion vessel 8 l.
005	5198260	Main burner assembly
006	6235932	Ignition-ionisation electrode
007	6318550	Combustion Chamber front panel
008	6318721	Combustion chamber rear insulat
009	6318710	Combustion chamber side insulat
010	6174267	Heat exchanger
011	6231362	NTC sensor
012	6146711	Limit stat 80°C
013	5167595	Smoke chamber assembly
014	6073350	Smoke chamber mounting bracket
015	6317950	Combustion chamber front panel
016	6318701	Combustion chamber side insulat
017	6276620	Smoke chamber L.H.S. closure
018	6276521	Smoke chamber R.H.S. closure
019	6276720	Smoke chamber front closure
020	6264846	C.H. return pipe
021	6226412	O-ring 3068
022	6226601	Spring for heat exchanger conne
023	6264780	C.H. flow pipe
025	6146111	Hydrometer
026	6226628	Hydrometer Fixing spring
027	6226457	O-ring 12bis diam. 16x1,90
028	6017311	Flexible pipe L=250
029	6226464	O-ring 115 diam. 11,91x2,62
030	6226627	Expansion vassel fixing spring
031	6318010	Frame assembly lower side
032	6243833	Gas valve
033	2030228	Gasket Ø 17x24x2
034	6226884	Gas inlet pipe

035	6226958	Pipe conn. gas valve to burner	
036	6304791	Panel kit	
037	6301440	Main PCB	
038	2211010	Terminal strip	
039	6305050	Control panel cover	
040	6317851	Casing	
041	6319690	kit 14 plate heat exchanger + o	
042	6319625	Diverting valve body	
043	6319620	Divertor valve motor	
044	6319603	Discharger cock	
045	6040211	Pressure relief valve 3 bar	
046	6319640	By-pass	FINO MATR.4040302654
046A	6319641	By-pass 2 (new)	DA MATR. 4040302655
047	6319618	Primary filter component	
048	6319601	Sensor hall complete	
049	6319634	Filling cock	
050	6319633	Flowmeter without reg. of capac	
051	6037504	Water pressure switch	
052	6272310	Circulating pump	
053	6013182	Automatic air vent	
054	6120533	C.H Nipple	
055	6120532	D.H.W. Nipple	
056	6120534	D.H.W. Nipple exit	
057	6022004	Copper washer Ø 6	
058	6154402	Main burner nozzle NP 130 natur	MET
058A	6154419	Main burner nozzle diam. 0,72 M	GPL
059	6267112	D.H.W. expans. vessel locking b	
060	6319682	D.H.W. Technyl manifold group	
061	6319681	C.H. Technyl manifold group	
700	5199520	Complete control panel	
701	6127214	Main cable L=1500	
702	6245374	Circulating pump connector	
703	6316253	9 pole Stocko connector	
704	6316255	6 pole Stocko connector CN6	
705	6316278	5 pole cable connector CN7	
706	6316298	14 pole cable connector CN4	
708	6319699	Split pin kit for hydraulic gro	
709	6319698	O-ring kit for hydraulic group	
711	6281534	Gaskets kit	
712	5144722	L.P.G. conversion kit	
715	5198691	Technyl hydraulic group	
716	6319695	Murelle-Format-.....o-ring kit	
717	8076110	Expas.major vassel ZILMET	
719	6211792	Hydraul. group Bitron caps kit	