

WESTEN



energy

SPARE PARTS LIST

- February 2005 -

WESTEN

HOW TO READ THE SPARE PARTS CATALOGUE

In the spare part catalogue, after the exploded diagrams, there are the components lists of the boilers; this is the meaning of the different columns:

Pos.	Identification number of the component in the exploded diagram of the boiler.
Description	Short description of the component.
Code	BAXI S.p.A. code of the component.
Tab. XX	XX is the exploded diagram number of the boiler taken into consideration.
From serial number	Date (year and week) identifying the beginning of production of a component (taken from the serial number of the boiler). e.g. B005: year 2000 (B identifies the decade 2000-2009; 0 identifies the year) – 5th week . If the box is empty, the component is in use from the beginning of production of the boiler.
To serial number	Date (year and week) identifying the end of production of a component (taken from the serial number of the boiler). e.g. B012: year 2000 (B identifies the decade 2000-2009; 0 identifies the year) – 12th week . If the box is empty, the component is still in use.
Interchangeable	It identifies the interchangeability between the new component and the old one. YES: components are interchangeable. NO: components are <u>not</u> interchangeable.

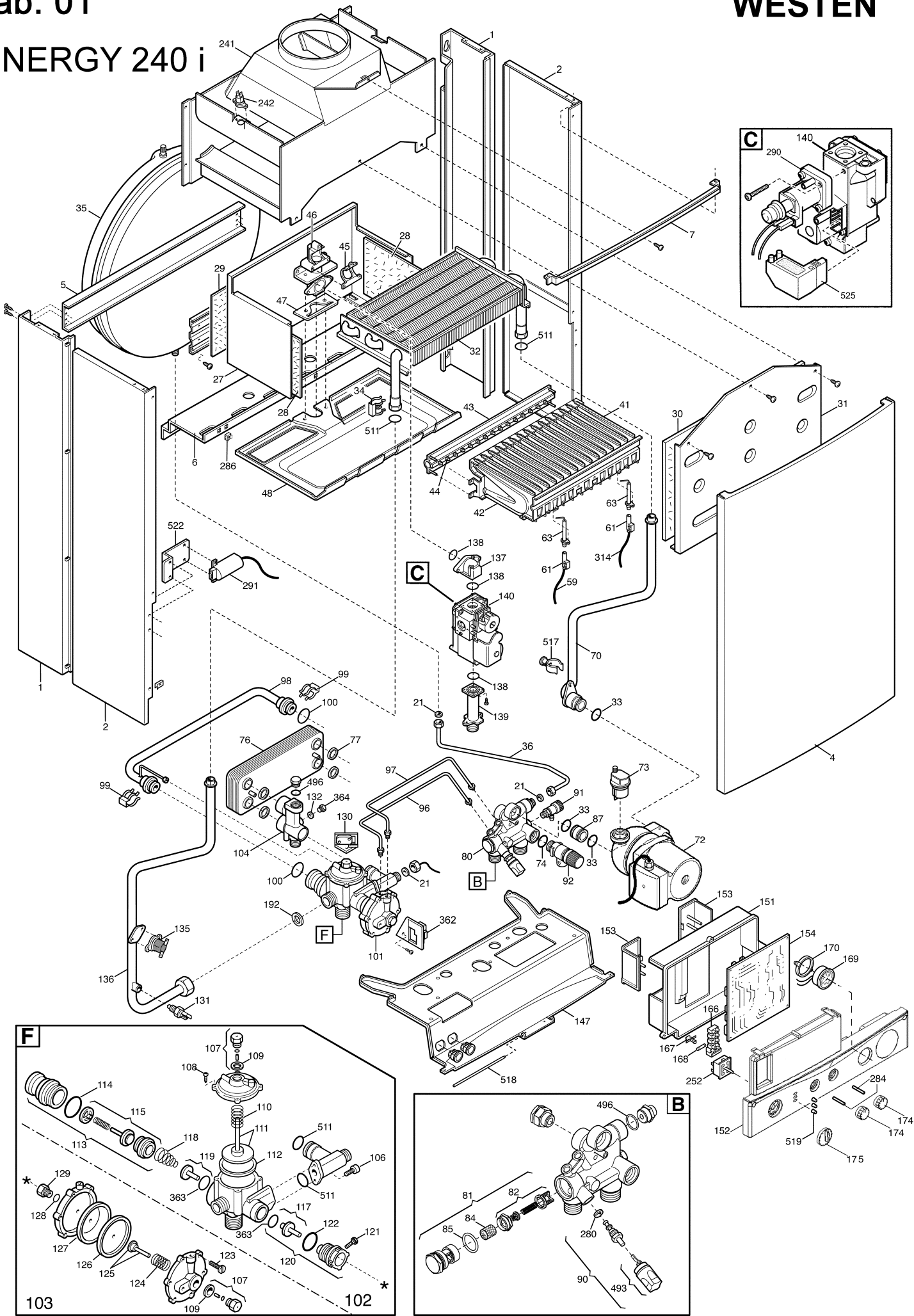
Note

Every model of boiler is available in the version working with Natural Gas or in the version working with LPG. The boiler's code (composed of a prefix CWB and 9 numbers) identifies the version as follows:

6th number = 1: LPG version

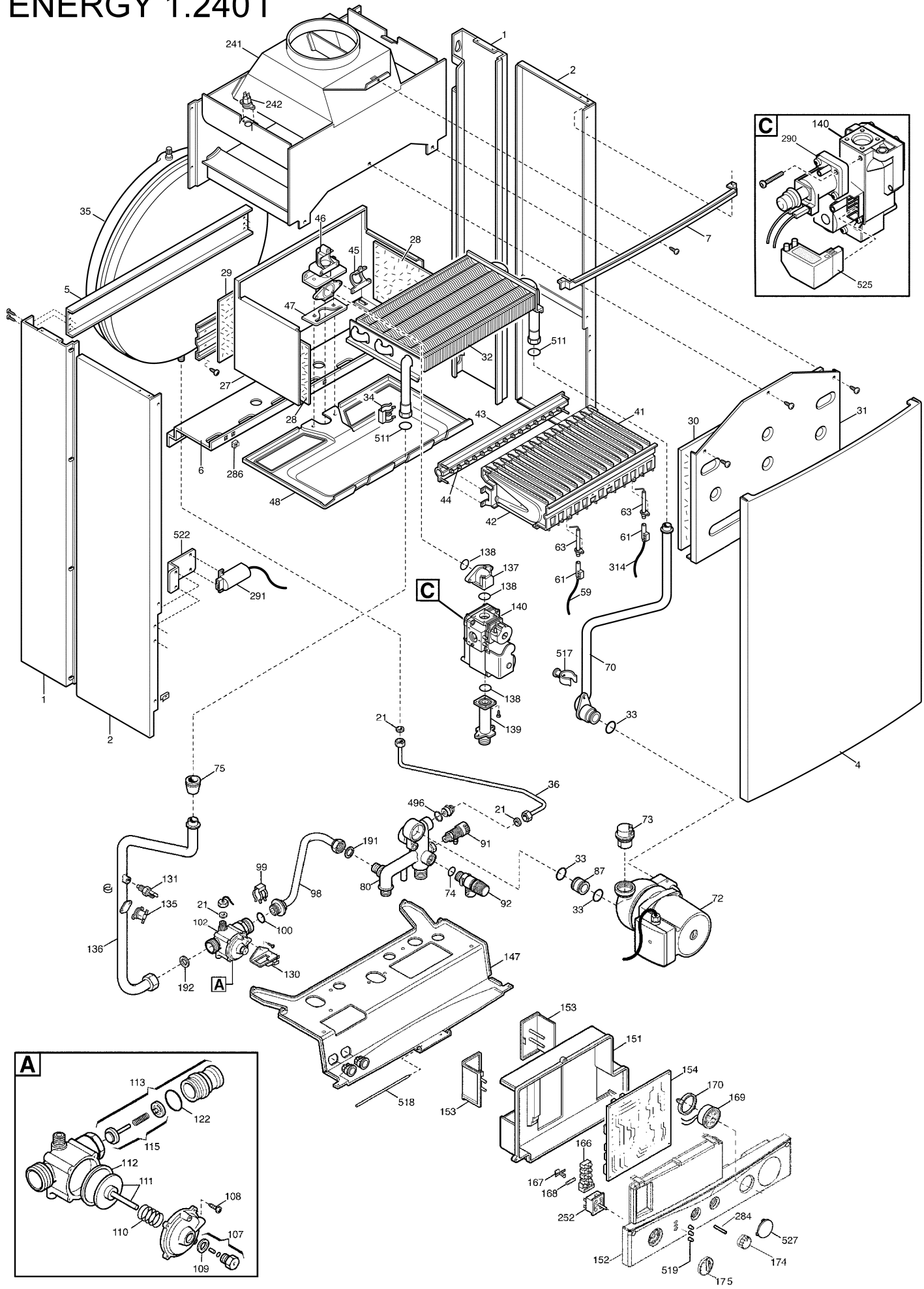
6th number = 3: Natural Gas version

ENERGY 240 i



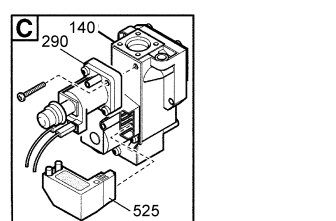
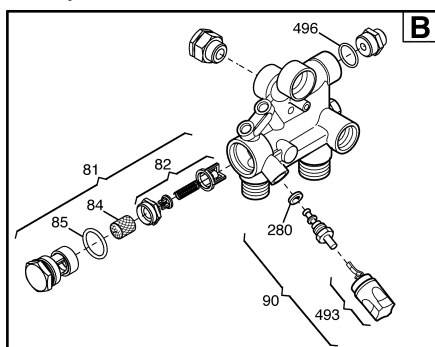
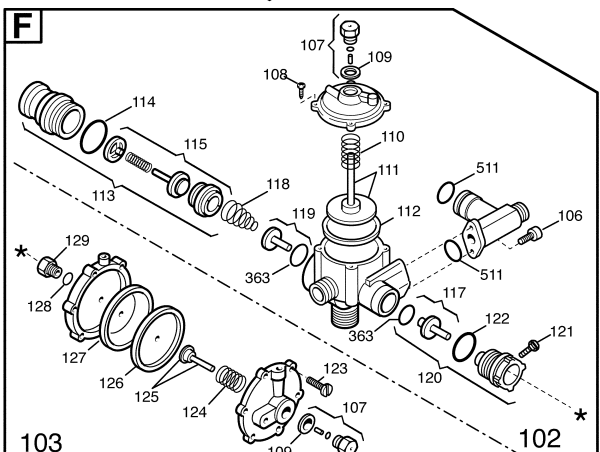
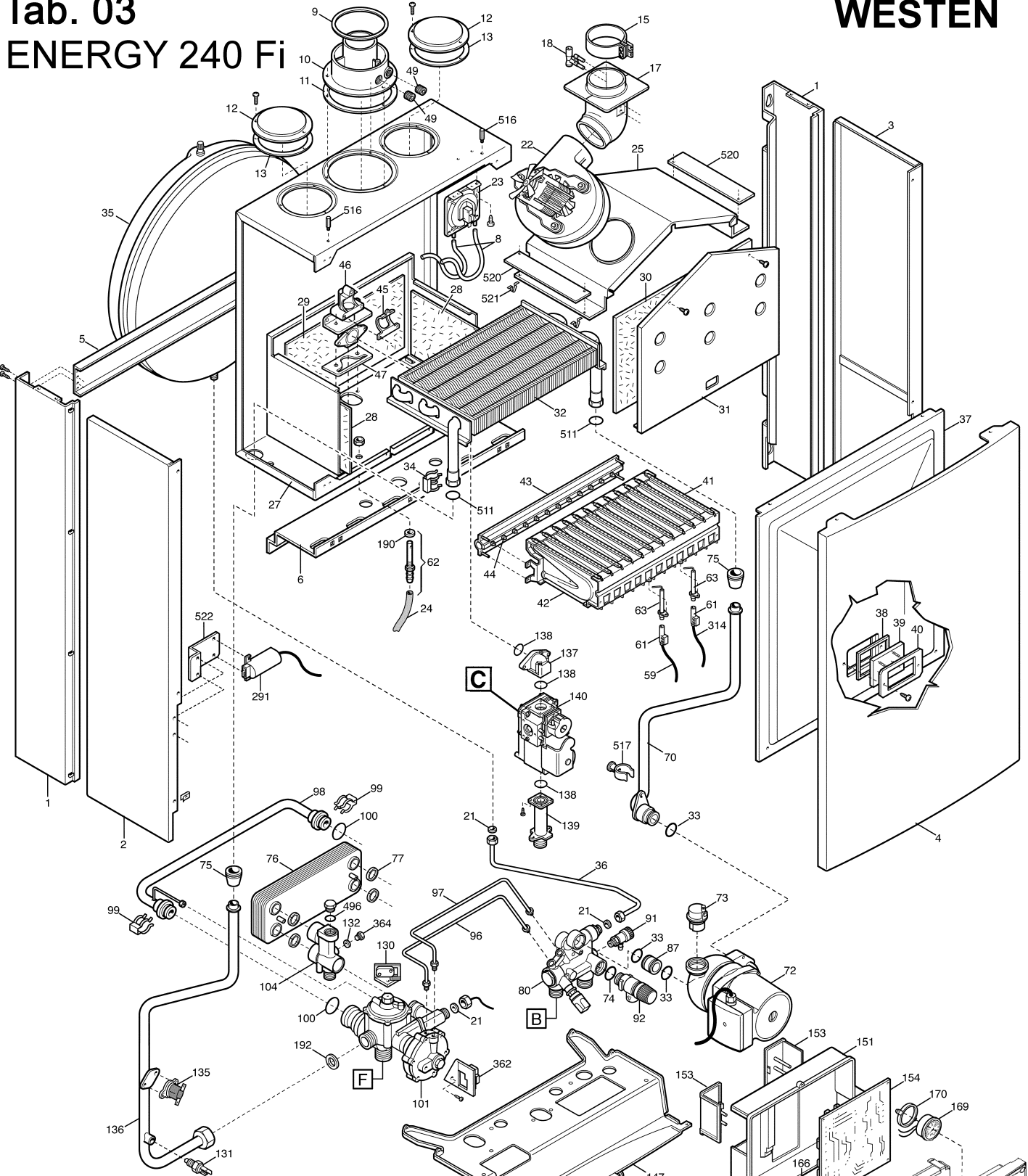
Tab. 02 ENERGY 1.240 i

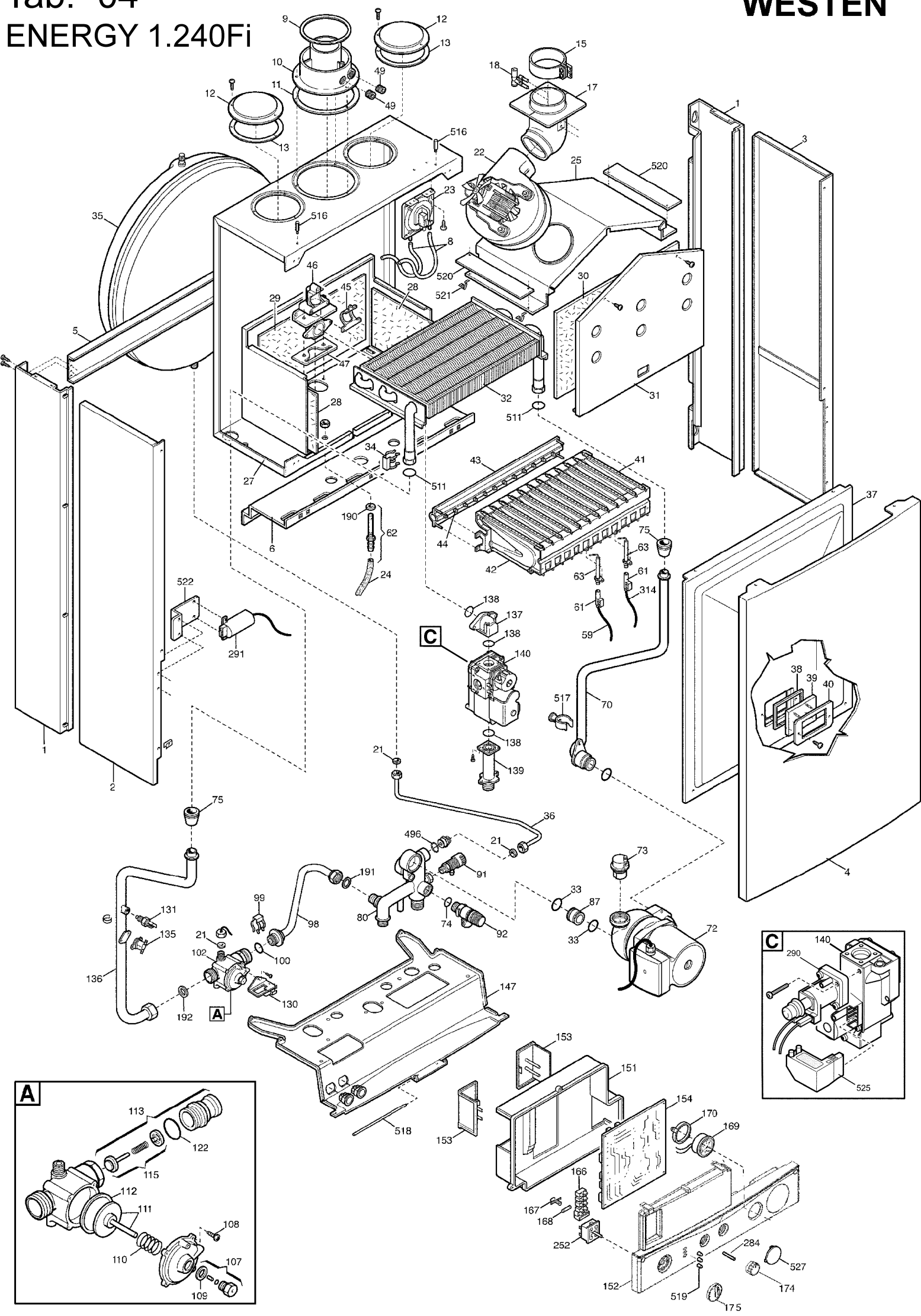
WESTEN



Tab. 03 ENERGY 240 Fi

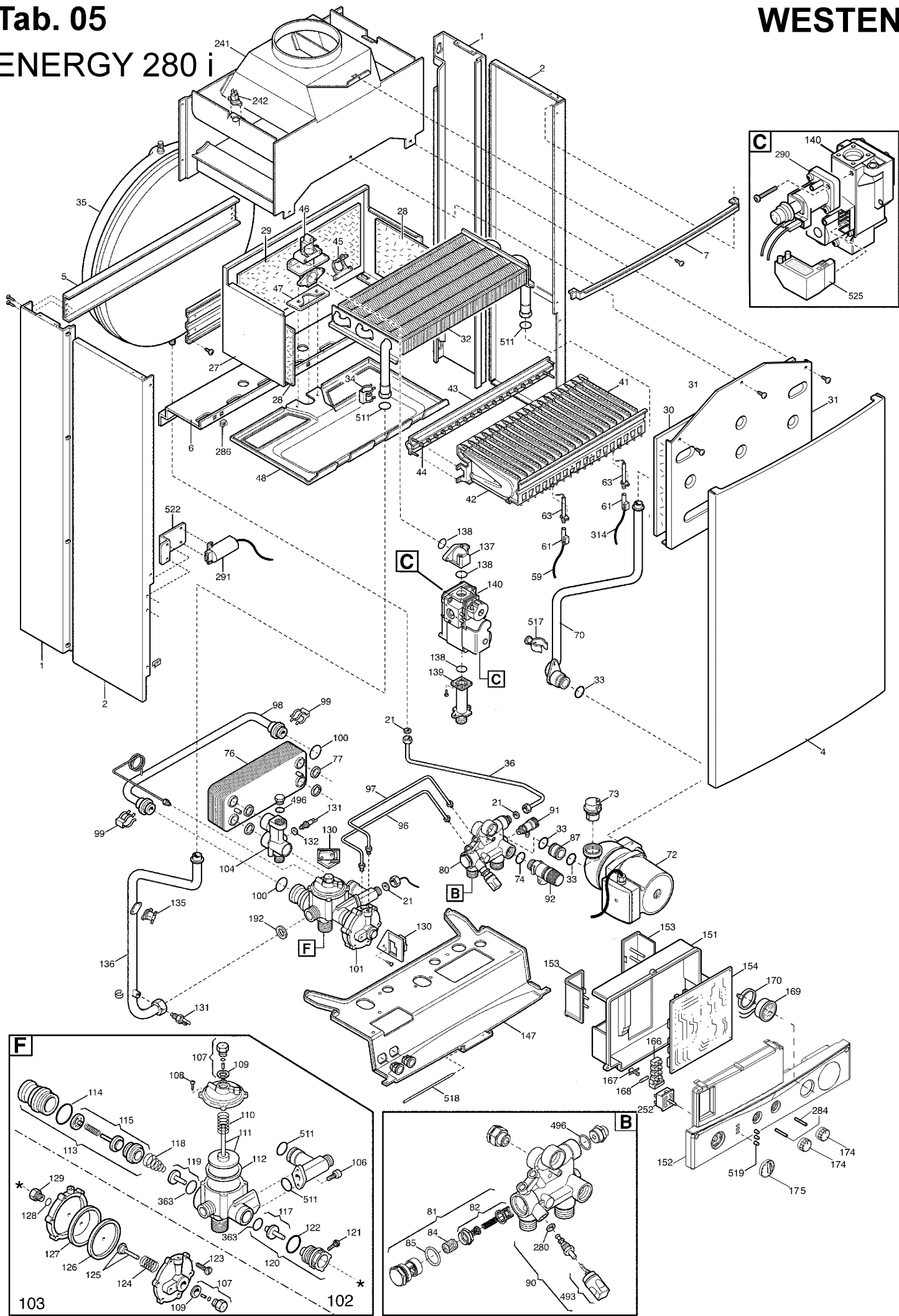
WESTEN





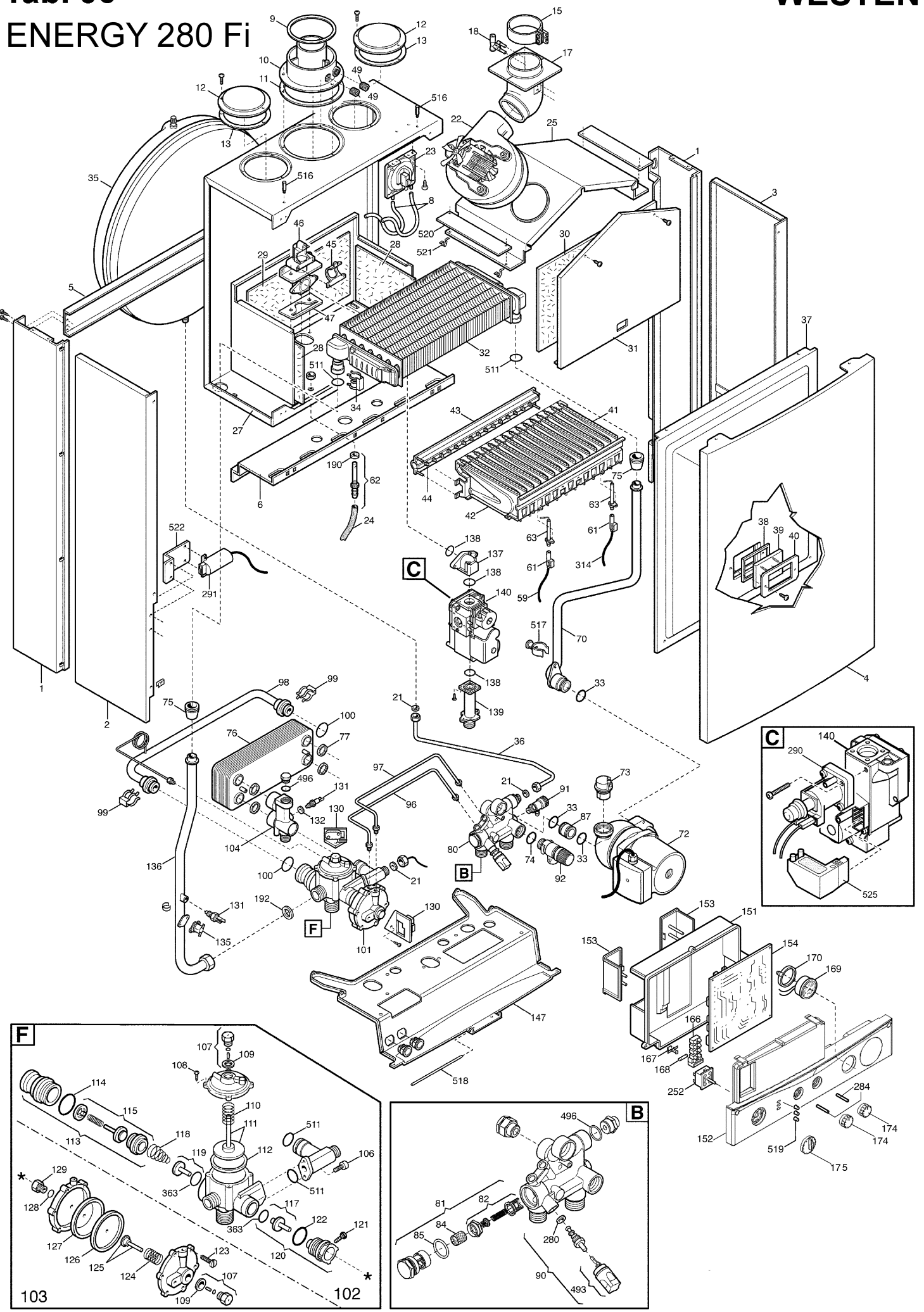
Tab. 05 ENERGY 280 i

WESTEN



Tab. 06 ENERGY 280 Fi

WESTEN



WESTEN Energy

Serial n° B411...

CYH43224X980 ENERGY 240 I
 CYH43224X981 ENERGY 240 I
 CYH43124X980 ENERGY 240 I
 CYH43124X981 ENERGY 1,240 I
 CYH43624X980 ENERGY 240 FI
 CYH43624X981 ENERGY 240 FI
 CYH43228X980 ENERGY 1,240 FI
 CYH43228X981 ENERGY 280 I
 CYH43628X980 ENERGY 280 FI
 CYH43628X981 ENERGY 280 FI

X=1->LPG / X=3->NATURAL GAS

Pos.	Description	Code	Serial n° B411...												From serial number	To serial number	Inter-changeable		
			Tab. 01	Tab. 01	Tab. 02	Tab. 02	Tab. 03	Tab. 03	Tab. 04	Tab. 04	Tab. 05	Tab. 05	Tab. 06	Tab. 06					
1	LATERAL REAR SUPPORT H=763	5656180						•	•	•	•				•	•			
1	LATERAL REAR SUPPORT H=803	5656190	•	•	•	•								•	•				
2	LEFT PANEL ASSEMBLY H=763	5653630						•	•	•	•				•	•			
2	LATERAL PANEL H=803	5112030	•	•	•	•								•	•				
3	RIGHT PANEL ASSEMBLY H=763	5653620						•	•	•	•				•	•			
4	FRONTAL PANEL ASSEMBLY I	5656390	•	•	•	•								•	•				
4	FRONTAL PANEL ASSEMBLY FI	5112280						•	•	•	•				•	•			
5	UPPER TRAVERSE	5110290	•	•	•	•	•	•	•	•	•	•	•	•	•	•	•		
6	LOWER TRAVERSE	5109640	•	•	•	•	•	•	•	•	•	•	•	•	•	•	•		
7	FRONTAL TRAVERSE	5112020	•	•	•	•								•	•				
8	PRESSURE SWITCH PIPE L=270	5408080						•	•	•	•				•	•			
9	ASPIRATION RESTRICTOR D.80	5108700						•	•	•	•				•	•			
10	COAXIAL FLUE FLANGE	5207060						•	•	•	•				•	•			
11	FLANGE GASKET	5407890						•	•	•	•				•	•			
12	SUCTION CAP	5108690						•	•	•	•				•	•			
13	SUCTION CAP GASKET	5407400						•	•	•	•				•	•			
15	JOINT ASSEMBLY (with gasket and screws)	600530						•	•	•	•				•	•			
17	CONVEYOR BEND	5210640						•										B037	
17	CONVEYOR BEND	5211090						•	•	•	•				•	•		B037	YES
18	FLUE PLASTIC VENTURI	5407050						•	•	•	•				•	•			
21	GASKET 6,1X12X1,5 WRC (ex 5402050)	5402080	•	•	•	•	•	•	•	•	•	•	•	•	•	•	•		
22	FAN 1 SPEED (MVL)	5653850						•	•	•	•								
22	FAN 1 SPEED	5655730													•	•			
23	FAN PRESSURE SWITCH (TRIDELTA)	5655140						•										B037	
23	FAN PRESSURE SWITCH (TRIDELTA)	5655120						•	•	•	•				•	•		B037	YES
23	FAN PRESSURE SWITCH (HONEYWELL)	5617550						•										B037	
23	FAN PRESSURE SWITCH (HONEYWELL)	5629560						•	•	•	•				•	•		B037	YES
23	FAN PRESSURE SWITCH	618470						•	•	•	•				•	•		B441	YES
24	COMPENSATION PIPE L=150	5407930						•	•	•	•				•	•			
25	CONVEYOR ASSEMBLY	5653170						•	•	•	•								
25	CONVEYOR ASSEMBLY	5653180													•	•			
27	COMBUSTION CHAMBER ASSEMBLY (ATM)	5653760	•	•	•	•													
27	COMBUSTION CHAMBER ASSEMBLY (ATM)	5655510												•	•				
27	COMBUSTION CHAMBER ASSEMBLY (FF)	5653780						•	•	•	•								
27	COMBUSTION CHAMBER ASSEMBLY (FF)	5655480													•	•			

WESTEN Energy

Serial n° B411...

CYH43224X980 ENERGY 240 I
 CYH43224X981 ENERGY 240 I
 CYH43124X980 ENERGY 1,240 I
 CYH43124X981 ENERGY 1,240 I
 CYH43624X980 ENERGY 240 FI
 CYH43624X981 ENERGY 240 FI
 CYH43228X980 ENERGY 1,240 FI
 CYH43228X981 ENERGY 1,240 FI
 CYH43628X980 ENERGY 280 I
 CYH43628X981 ENERGY 280 I

X=1->LPG / X=3->NATURAL GAS

Pos.	Description	Code	Tab. 01	Tab. 01	Tab. 02	Tab. 02	Tab. 03	Tab. 03	Tab. 04	Tab. 04	Tab. 05	Tab. 05	Tab. 06	Tab. 06	From serial number	To serial number	Inter-changeable
28	LATERAL INSULATING PANEL	5210250	●	●	●	●	●	●	●	●	●						YES
28	LATERAL INSULATING PANEL	5213160	●	●	●	●	●	●	●	●	●						
28	LATERAL INSULATING PANEL	5210910										●	●				YES
28	LATERAL INSULATING PANEL - 31 kW	5213190										●	●				
29	REAR INSULATING PANEL	5210260	●	●	●	●	●	●	●			●	●				YES
29	REAR INSULATING PANEL	5213290	●	●	●	●	●	●	●			●	●				
29	REAR INSULATING PANEL	5210280								●	●						YES
29	REAR INSULATING PANEL-28 kw	5213240								●	●						
30	FRONTAL INSULATING PANEL (FF)	5210750					●	●	●	●			●	●			YES
30	FRONTAL INSULATING PANEL (FF)	5213340					●	●	●	●			●	●			
30	FRONTAL INSULATING PANEL (ATM)	5210270	●	●	●	●					●	●					YES
30	FRONTAL INSULATING PANEL (ATM)	5213310	●	●	●	●					●	●					
31	COMB.CHAMBER FRONT PANEL (FF)	5111840					●	●	●	●							
31	COMB.CHAMBER FRONT PANEL (ATM)	5108030	●	●	●	●											
31	COMB.CHAMBER FRONT PANEL (FF)	5111850											●	●			
31	COMB.CHAMBER FRONT PANEL (ATM)	5108500									●	●					
32	PRIMARY EXCHANGER WITH CLIPS	5632470	●	●	●	●	●	●	●								
32	PRIMARY EXCHANGER WITH CLIPS	5636760									●	●					
32	PRIMARY EXCHANGER WITH CLIPS	608550											●	●			
33	O-RING 22X3 EPDM	5403130	●	●	●	●	●	●	●	●	●	●	●				
34	PRIMARY EXCHANGER FIXING CLIPS (ex 5109470)	5112510	●	●	●	●	●	●	●	●	●	●	●				
35	EXPANSION VESSEL 8 L.	5625560	●	●	●	●	●	●	●								
35	EXPANSION VESSEL 10 L.	5608840									●	●	●	●			
36	EXPANSION VESSEL 8 PIPE	5653290	●	●	●	●	●	●	●	●	●	●	●				
37	SEALED CHAMBER FRONT PANEL	5653710					●	●	●	●							
37	SEALED CHAMBER FRONT PANEL	5655750											●	●			
38	PILOT SIGHT GLASS GASKET	5401610					●	●	●	●			●	●			
39	PILOT SIGHT GLASS	5203930					●	●	●	●			●	●			
40	PILOT SIGHT FRAME	5103360					●	●	●	●			●	●			
41	BURNER ASSEMBLY (12 ELEMENTS)	5653310					●	●	●	●							
41	BURNER ASSEMBLY (15 ELEMENTS)	5653300	●	●	●	●							●	●			
41	BURNER ASSEMBLY (18 ELEMENTS)	5655610									●	●					
42	BURNER ELEMENT	5604090	●	●	●	●	●	●	●	●	●	●	●				
43	GAS RAMP WITH INJECTORS (LPG D.0,77)	605990					●	●	●	●							
43	GAS RAMP WITH INJECTORS (N.G. D.1,28)	605850					●	●	●	●							

WESTEN Energy

Serial n° B411...

CYH43224X980 ENERGY 240 I
 CYH43224X981 ENERGY 240 I
 CYH43124X980 ENERGY 240 I
 CYH43124X981 ENERGY 1,240 I
 CYH43624X980 ENERGY 240 FI
 CYH43624X981 ENERGY 240 FI
 CYH43228X980 ENERGY 1,240 FI
 CYH43228X981 ENERGY 280 I
 CYH43628X980 ENERGY 280 I
 CYH43628X981 ENERGY 280 FI

X=1->LPG / X=3->NATURAL GAS

Pos.	Description	Code	Tab. 01	Tab. 01	Tab. 02	Tab. 02	Tab. 03	Tab. 03	Tab. 04	Tab. 04	Tab. 05	Tab. 05	Tab. 06	Tab. 06	From serial number	To serial number	Inter-changeable
43	GAS RAMP WITH INJECTORS (LPG D.0,69)	606190	●	●	●	●											
43	GAS RAMP WITH INJECTORS (N.G. D.1,18)	606140	●	●	●	●											
43	GAS RAMP WITH INJECTORS (N.G. D.1,18)	606910									●	●					
43	GAS RAMP WITH INJECTORS (L.P.G. D.0,67)	606920									●	●					
43	GAS RAMP WITH INJECTORS (N.G. D.1,28)	607410											●	●			
43	GAS RAMP WITH INJECTORS (L.P.G. D.0,77)	607400											●	●			
44	LPG INJECTORS KIT (D.0,77)	608450					●	●	●	●			●	●			
44	NATURAL GAS INJECTORS KIT (D.1,28)	608430					●	●	●	●			●	●			
44	LPG INJECTORS KIT (D.0,69)	608460	●	●	●	●											
44	NATURAL GAS INJECTORS KIT (D.1,18)	608440	●	●	●	●					●	●					
44	LPG INJECTORS KIT (D.0,67)	608470									●	●					
45	GAS RAMP GASKET	5407940	●	●	●	●	●	●	●	●	●	●	●	●			
46	GAS RAMP CONNECTING FLANGE ASSEMBLY	5657180	●	●	●	●	●	●	●	●	●	●	●	●			
47	GASKET (GAS RAMP/SEALED CHAMBER)	5407810					●	●	●	●			●	●			
48	BURNER TRAY	5112090	●	●	●	●					●	●					
49	FLUE FLANGE CAP M14X1	5207070					●	●	●	●			●	●			
59	IGNITION ELECTRODE CABLE	8419050	●	●	●	●	●	●	●	●	●	●	●	●			
61	ELECTRODE PROTECTION CAP (ATM)	5404920	●	●	●	●					●	●					
61	ELECTRODE PROTECTION CAP (FF)	5407830					●	●	●	●			●	●			
62	SEALED CHAMBER HOSE ADAPTER ASS.	5643090					●	●	●	●			●	●			
63	IGNITION ELECTRODE	8422570	●	●	●	●	●	●	●	●	●	●	●	●			
70	PIPE ASSEMBLY (PUMP/EXCHANGER)	5653250	●	●	●	●	●	●	●	●			●	●			
70	PIPE ASSEMBLY (PUMP/EXCHANGER)	5655530									●	●					
70	PIPE ASSEMBLY (PUMP/EXCHANGER)	5655470											●	●			
72	PUMP UP 15-50 AO (GRUNDFOS)	5655200	●	●	●	●	●	●	●	●							
72	PUMP UP 15-60 AO (GRUNDFOS)	5655620									●	●	●	●			
73	AIR VENT VALVE WITH O-RING (GRUNDFOS)	607290	●	●	●	●	●	●	●	●	●	●	●	●			
74	O-RING 14X1,78 EP	5406360	●	●	●	●	●	●	●	●	●	●	●	●			
75	GASKET (WATER PIPE/SEALED CHAMBER)	5404670					●	●	●	●			●	●			
76	DHW PLATE EXCHANGER (ALFA LAVAL) alt.9951080	5653650	●	●			●	●									
76	DHW PLATE EXCHANGER	5653680									●	●					
76	DHW PLATE EXCHANGER	5655780											●	●			
77	DHW EXCHANGER GASKET	5404520	●	●			●	●			●	●	●	●			
80	HYDRAULIC INLET GROUP	5655650			●	●			●	●							
80	HYDRAULIC INLET GROUP WITH FILLING TAP	5653550	●	●			●	●			●	●	●	●			

WESTEN Energy

Serial n° B411...

CYH43224X980 ENERGY 240 I
 CYH43224X981 ENERGY 240 I
 CYH43124X980 ENERGY 240 I
 CYH43124X981 ENERGY 1,240 I
 CYH43624X980 ENERGY 240 FI
 CYH43624X981 ENERGY 240 FI
 CYH43228X980 ENERGY 1,240 FI
 CYH43228X981 ENERGY 280 I
 CYH43628X980 ENERGY 280 I
 CYH43628X981 ENERGY 280 FI

X=1->LPG / X=3->NATURAL GAS

Pos.	Description	Code	Tab. 01	Tab. 01	Tab. 02	Tab. 02	Tab. 03	Tab. 03	Tab. 04	Tab. 04	Tab. 05	Tab. 05	Tab. 06	Tab. 06	From serial number	To serial number	Inter-changeable
81	FILTER AND VENTURI ASSEMBLY	607240	●	●			●	●			●	●	●	●			
82	HYDRAULIC VENTURI ASSEMBLY	5630170	●	●			●	●			●	●	●	●			
84	FILTER D. 13,5	5111180	●	●			●	●			●	●	●	●			
85	O-RING 20,63X2,62	5405350	●	●			●	●			●	●	●	●			
87	PUMP CONNECTING ELEMENT	5210710	●	●	●	●	●	●	●	●	●	●	●	●			
90	FILLING TAP ASSEMBLY	5630180	●	●			●	●			●	●	●	●			
91	DRAINING TAP (alt. 9951120)	5652030	●	●	●	●	●	●	●	●	●	●	●	●			
92	HYDRAULIC SAFETY VALVE 3 BAR WITH O-RING	5653690	●	●	●	●	●	●	●	●	●	●	●	●			
96	PRESSURE PIPE (POSITIVE)	5653280	●	●			●	●			●	●	●	●			
97	PRESSURE PIPE (NEGATIVE)	5653270	●	●			●	●			●	●	●	●			
98	BY-PASS PIPE ASSEMBLY	5653260	●	●			●	●			●	●	●	●			
98	BY-PASS PIPE ASSEMBLY	5628240			●	●			●	●							
99	BY-PASS PIPE FIXING CLIP	5108130	●	●	●	●	●	●	●	●	●	●	●	●			
100	O-RING 13,94X2,62 EPDM	5406630	●	●	●	●	●	●	●	●	●	●	●	●			
101	3 P.VALVE/PRESSOST./SENSOR ASS.	5653590	●	●			●	●			●	●	●	●			
102	BY PASS/PRESSOST.	5628230			●	●			●	●							
102	3 PORT VALVE/PRESSOSTAT ASSEMBLY	607250	●	●			●	●			●	●	●	●			
103	SENSOR ASSEMBLY (DHW PRESSOSTAT)	5629950	●	●			●	●			●	●	●	●			
104	SANITARY OUTLET CONNECTION	5653840	●	●			●	●			●	●	●	●			
106	SCREW M5X12	8101430	●	●			●	●			●	●	●	●			
107	PIN GUIDE ASSEMBLY	5630250	●	●	●	●	●	●	●	●	●	●	●	●			
108	SCREW M4X12	8101420	●	●	●	●	●	●	●	●	●	●	●	●			
109	GASKET 10X14X1,5	5207810	●	●	●	●	●	●	●	●	●	●	●	●			
110	SPRING	8380530	●	●	●	●	●	●	●	●	●	●	●	●			
111	PRESSURE SWITCH PLATE ASSEMBLY	5630240	●	●	●	●	●	●	●	●	●	●	●	●			
112	3 PORT VALVE DIAPHRAGM	5405320	●	●			●	●			●	●	●	●			
112	DIAPHRAGM	5405960			●	●			●	●							
113	BY-PASS ASSEMBLY	5630190	●	●			●	●			●	●	●	●			
113	BY-PASS ASSEMBLY	5635220			●	●			●	●							
114	O-RING 26,64X2,62	5403820	●	●			●	●			●	●	●	●			
115	BY-PASS PLUG ASSEMBLY	5645660	●	●	●	●	●	●	●	●	●	●	●	●			
117	SANITARY PLATE ASSEMBLY	5646180	●	●			●	●			●	●	●	●			
118	CONIC SPRING	8380520	●	●			●	●			●	●	●	●			
119	HEATING PLATE ASSEMBLY	5646170	●	●			●	●			●	●	●	●			
120	SANITARY PLUG ASSEMBLY	5646190	●	●			●	●			●	●	●	●			

WESTEN Energy

Serial n° B411...																	X=1->LPG / X=3->NATURAL GAS		
Pos.	Description	Code	Serial n° B411...												From serial number	To serial number	Inter-changeable		
			Tab. 01	Tab. 01	Tab. 02	Tab. 02	Tab. 03	Tab. 03	Tab. 04	Tab. 04	Tab. 05	Tab. 05	Tab. 06	Tab. 06					
166	TERMINAL BLOCK	8421590	●	●	●	●	●	●	●	●	●	●	●	●	●				
167	FUSE HOLDER	5405340	●	●	●	●	●	●	●	●	●	●	●	●	●				
168	FUSE (2A-250V) alt. 8421410	9950580	●	●	●	●	●	●	●	●	●	●	●	●	●				
169	MANOMETER	5653700	●		●		●										B137		
169	THERMAL PRESSURE GAUGE	8922380	●	●	●	●	●	●	●	●	●	●	●	●	●	B137		YES	
170	MANOMETER SUPPORT	5407750	●	●	●	●	●	●	●	●	●	●	●	●	●				
174	POTENTIOMETER KNOB	5408050	●	●	●	●	●	●	●	●	●	●	●	●	●				
175	SELECTOR KNOB	5408040	●	●	●	●	●	●	●	●	●	●	●	●	●				
190	GASKET G3/8 8X15X2 WRC	5404970					●	●	●	●				●	●				
192	GASKET G3/4 17X24X2 WRC	5404650	●	●	●	●	●	●	●	●	●	●	●	●	●				
241	DRAUGHT DIVERTER ASSEMBLY	5625860	●	●	●	●													
241	DRAUGHT DIVERTER ASSEMBLY	5645560											●	●					
242	FLUE SAFETY THERMOSTAT 70°C	600700	●	●	●	●													
242	FLUE SAFETY THERMOSTAT 60°C	616080											●	●					
252	SELECTOR SWITCH (4 POSITION)	8434550	●	●	●	●	●	●	●	●	●	●	●	●	●				
280	GASKET 14,2X18X1,5	5207730	●	●			●	●					●	●	●	●			
284	POTENTIOMETER PIN	5405990	●	●	●	●	●	●	●	●	●	●	●	●	●				
286	NUT M5	8240530	●	●	●	●							●	●					
290	MODULATOR ASSEMBLY -VK4105M-	5665600		●		●		●		●			●		●				
291	IGNITER WITH CABLE (HONEYWELL)	5653930	●		●		●		●		●		●		●				
314	FLAME SENSING ELECTRODE CABLE	8418870	●	●	●	●	●	●	●	●	●	●	●	●	●				
362	MICROSWITCH/SUPPORT/WIRING ASSEMBLY	607470	●	●			●	●					●	●	●	●			
363	O-RING 13,6X2,7	5405390	●	●			●	●					●	●	●	●			
364	CAP G1/8	5209600	●	●			●	●					●	●	●	●			
493	FILLING KNOB ASSEMBLY	605660	●	●			●	●					●	●	●	●			
496	O-RING	400020	●	●	●	●	●	●	●	●	●	●	●	●	●				
511	O-RING 17,86X2,62	5404600	●	●	●	●	●	●	●	●	●	●	●	●	●				
516	PIN	5210670					●	●	●	●				●	●				
517	PIPE FIXING ELEMENT	5407840	●	●	●	●	●	●	●	●	●	●	●	●	●				
518	CONTROL PANEL PIN	5112040	●	●	●	●	●	●	●	●	●	●	●	●	●				
519	NEON GLASS	5408060	●	●	●	●	●	●	●	●	●	●	●	●	●				
520	FLAP	5112050					●	●	●	●				●	●				
521	FLAP FIXING SPRING	8380730					●	●	●	●				●	●				
522	IGNITER SUPPORT	5655180	●	●	●	●	●	●	●	●	●	●	●	●	●				
525	IGNITER WITH CABLE (ANSTOSS)	8510910		●		●		●		●		●		●					

WESTEN Energy

Serial n° B411...

CYH43224X980 ENERGY 240 I
 CYH43224X981 ENERGY 240 I
 CYH43124X980 ENERGY 1,240 I
 CYH43124X981 ENERGY 1,240 I
 CYH43624X980 ENERGY 240 FI
 CYH43624X981 ENERGY 240 FI
 CYH43228X980 ENERGY 1,240 FI
 CYH43228X981 ENERGY 1,240 FI
 CYH43628X980 ENERGY 280 I
 CYH43628X981 ENERGY 280 I
 CYH43628X981 ENERGY 280 FI

X=1->LPG / X=3->NATURAL GAS

Pos.	Description	Code	Tab. 01	Tab. 01	Tab. 02	Tab. 02	Tab. 03	Tab. 03	Tab. 04	Tab. 04	Tab. 05	Tab. 05	Tab. 06	Tab. 06	From serial number	To serial number	Inter-changeable
527	HOLE PLATE	5408010			●	●			●	●							

	THERMOMETER BULB FIXING CLIP	5102970	●	●	●	●	●	●	●	●	●	●	●	●	B137		
	TERMINAL BOARD WIRING	8418950	●	●	●	●	●	●	●	●	●	●	●	●			
	NTC/PRESSURE SWITCH/LIMIT THERMOSTAT WIRING	5654000					●	●	●	●			●	●			
	NTC/PRESSURE SWITCH/LIMIT TH./FLUE TH. WIRING	5654110	●	●	●	●					●	●					
	IGNITER/GAS VALVE WIRING	8419110	●		●		●		●		●		●				
	PUMP/BOILER/SELECTOR SWITCH WIRING	8419170			●	●			●	●							
	FAN/FLUE PRESSURE SWITCH WIRING	8419120					●	●	●	●			●	●			
	POWER SUPPLY CABLE	8414620	●	●	●	●	●	●	●	●	●	●	●	●			
	TIMER CONNECTOR	8418860	●	●	●	●	●	●	●	●	●	●	●	●			